

Sunshine Estates Country Club Roadway Repairs 2021 Phase I and Miscellaneous Patching Revised

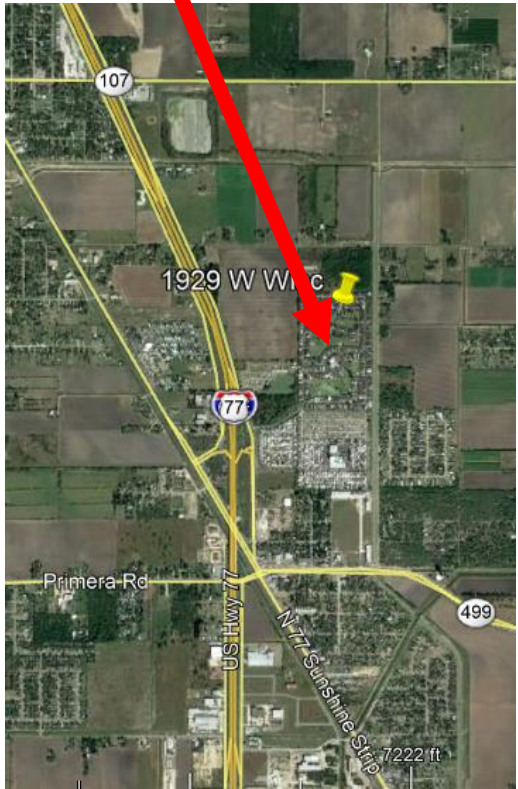
Prepared by T Tramel,
Member of Board of Directors
for Sunshine Country Club Estates Property Owners.
1957 W Michigan Ave, Harlingen, TX 78550
trtramel@gmail.com (Cell 337-693-6344)

Sunshine Estates Property Owners Roadway Repairs
– W. Indiana Circle

Sheets 1-25

Revisions: Ver 11, May 25, 2021 trt

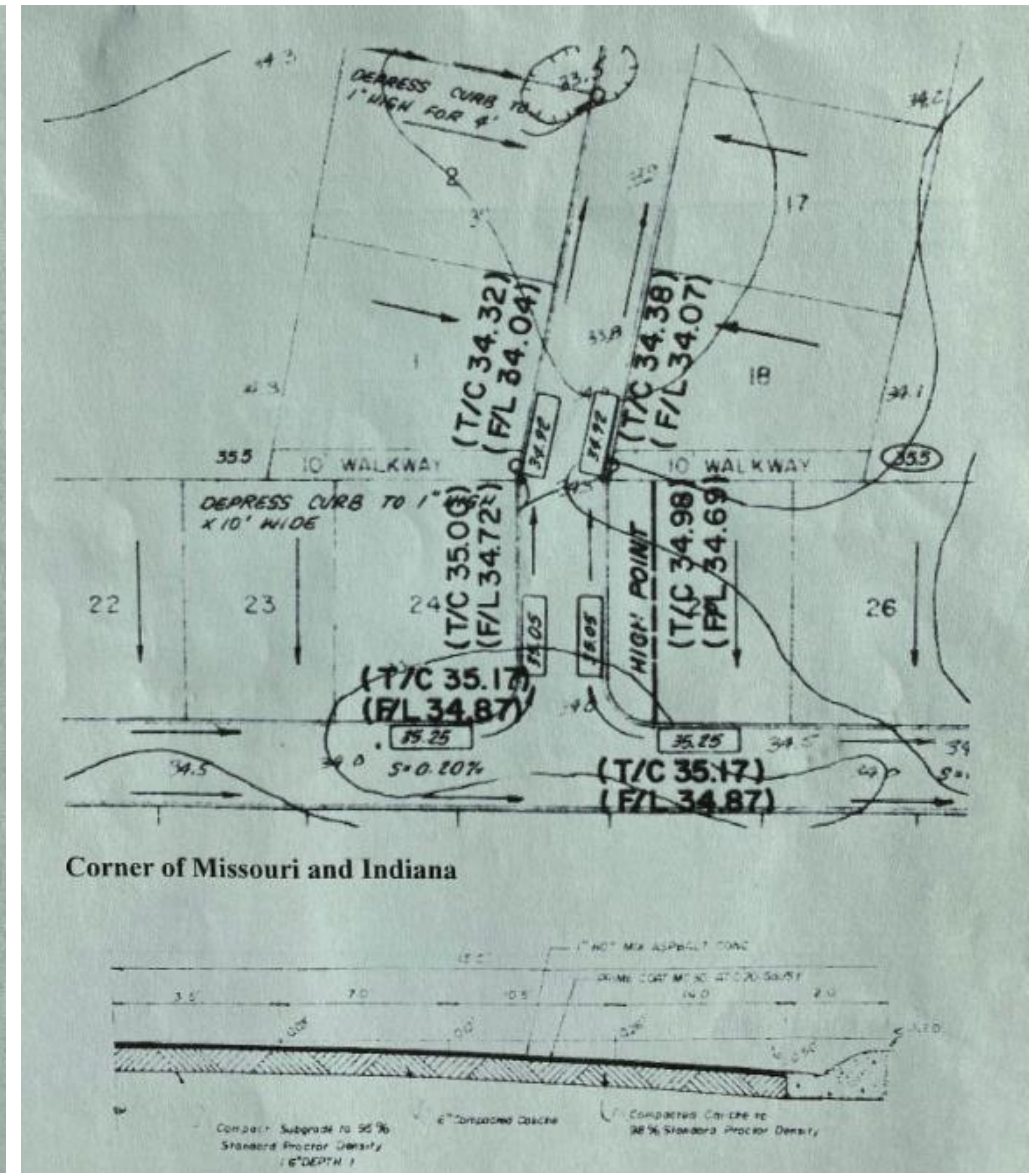
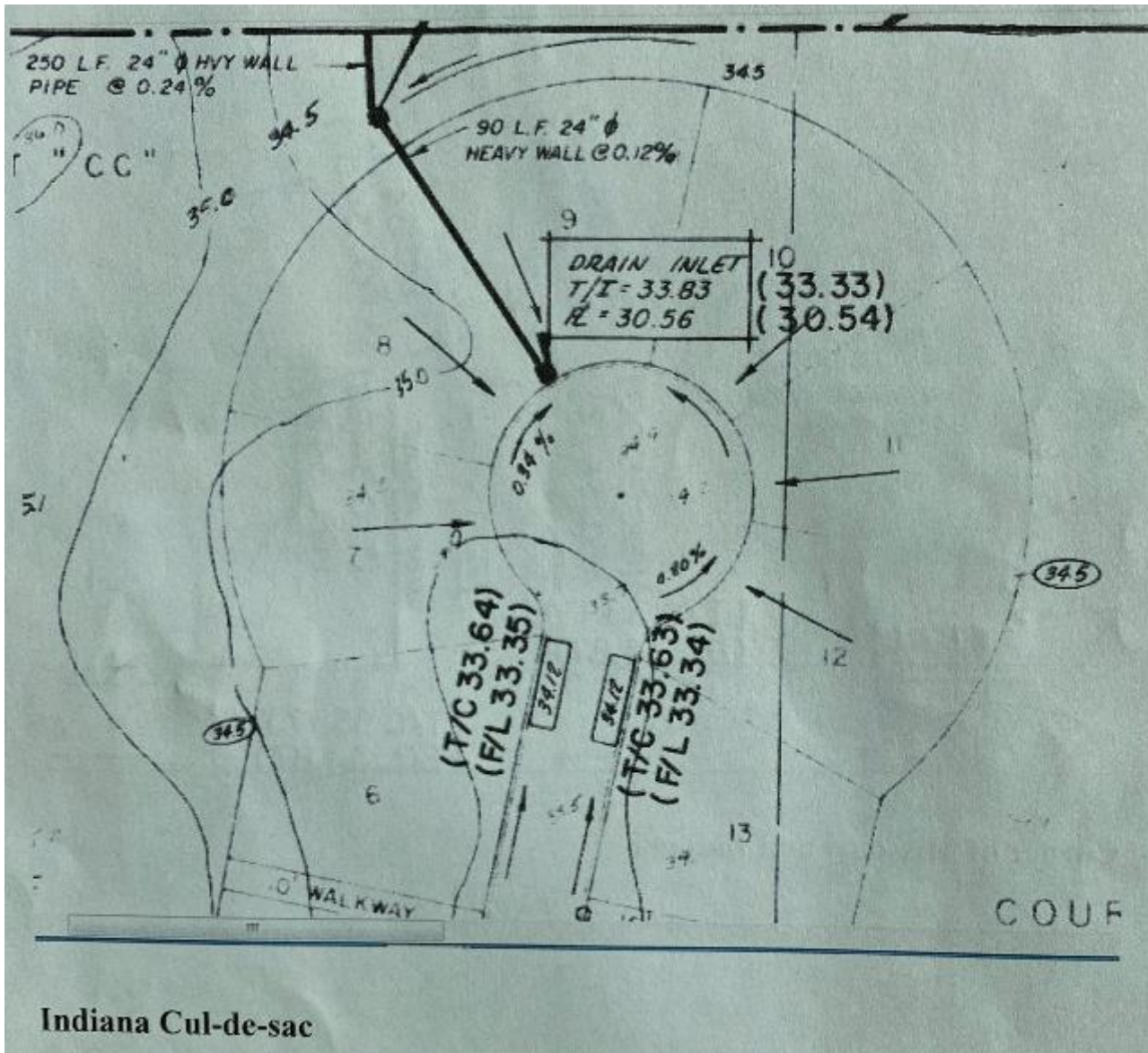
General Location



Sunshine Estates Country
Club Estates, 1957 W
Michigan, Harlingen, TX
78550

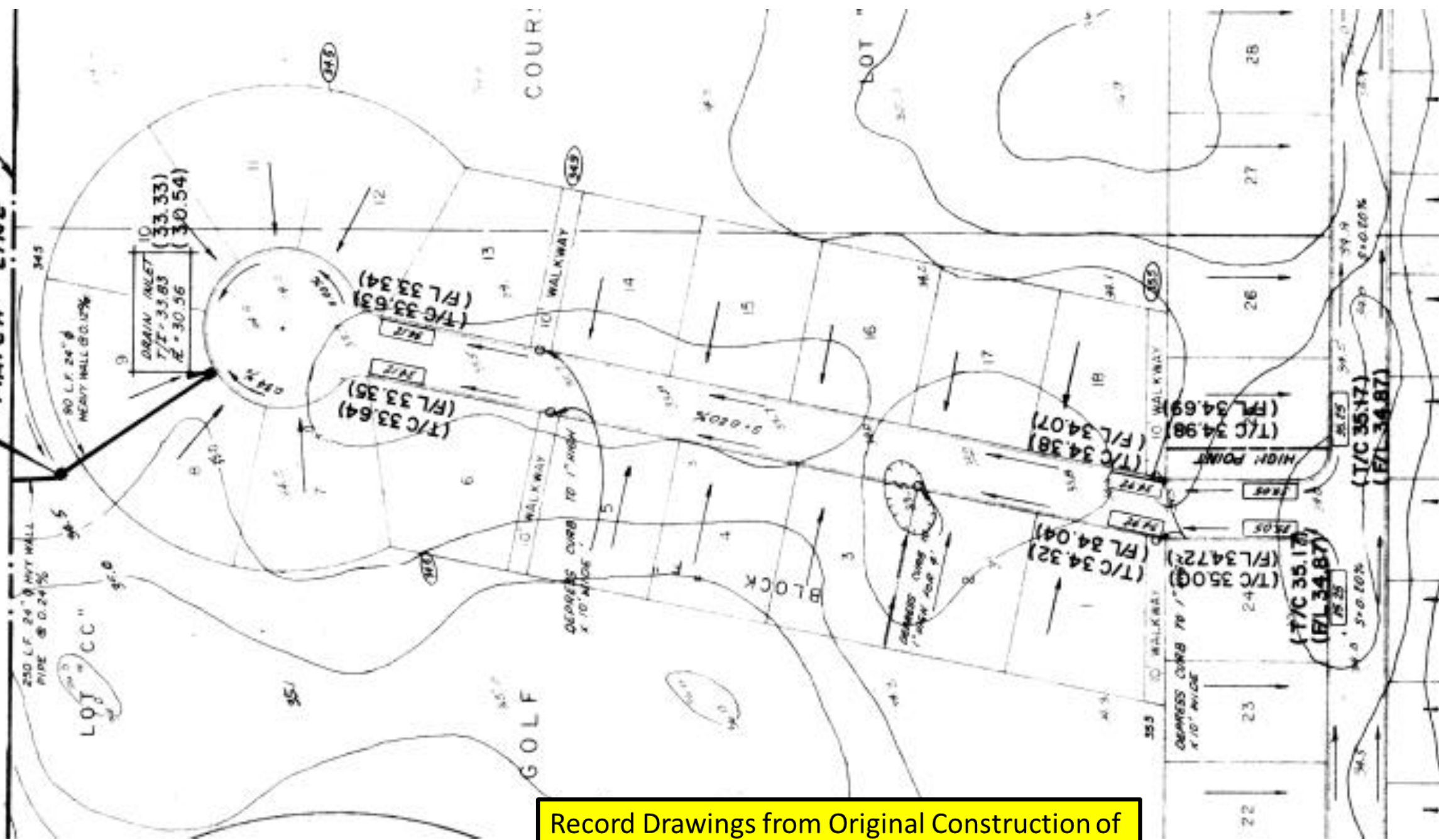


**Indiana Circle Project – Curb and
Gutter Replacement on Northside
and ±75% of Cul-de-Sac of Indiana
Circle, Including Asphalt Re-
Construction, See Details and
Typical's**

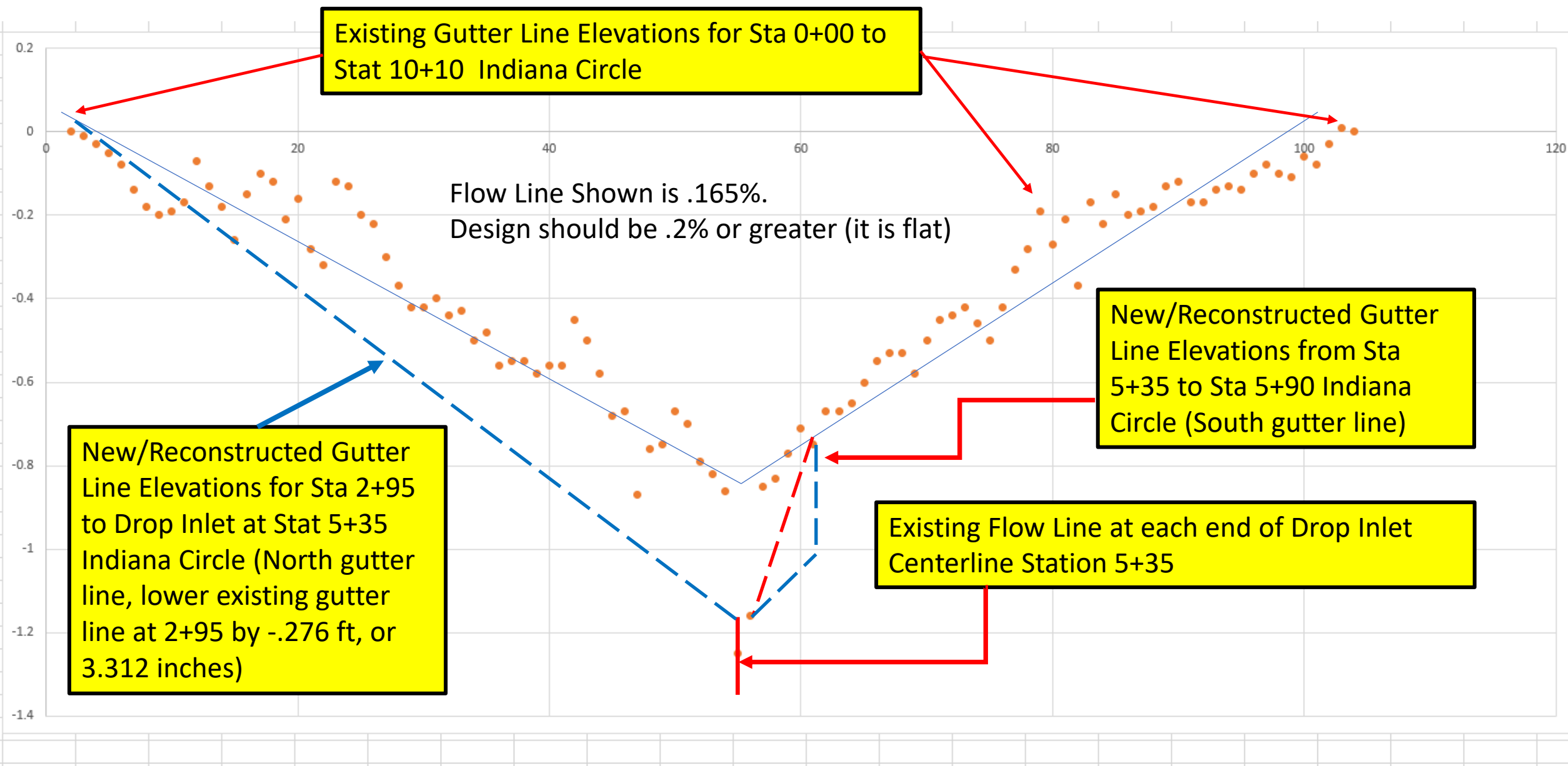


Record Drawings from Original Construction of Indiana Circle

MATCH LINE



Record Drawings from Original Construction of Indiana Circle



Data Collected Mach 28. 2020 by T Tramel and B Bledlow						Elevation of Stations Existing vs Proposed and Delta				
		Actual	34.92	Assume .2% from Plans		W Indiana Cir		New		
Station		Level Reading	1.002			Station	Existing	Elevation	Delta	
2 + 95		5.52	34.50	0.003298	34.51	2 + 90	-0.40	-0.684	-0.284	
3 + 00		5.54	34.48	0.003348	34.52	3 + 00	-0.44	-0.708	-0.268	
3 + 10		5.53	34.49	0.003448	34.48	3 + 10	-0.43	-0.731	-0.301	
3 + 20		5.60	34.42	0.003548	34.49	3 + 20	-0.50	-0.755	-0.255	
3 + 30		5.58	34.44	0.003647	34.42	3 + 30	-0.48	-0.778	-0.298	
3 + 40		5.66	34.36	0.003747	34.44	3 + 40	-0.56	-0.802	-0.242	
3 + 50		5.65	34.37	0.003847	34.36	3 + 50	-0.55	-0.825	-0.275	
3 + 60		5.65	34.37	0.003947	34.37	3 + 60	-0.55	-0.849	-0.299	
3 + 70		5.68	34.34	0.004047	34.37	3 + 70	-0.58	-0.873	-0.293	
3 + 80		5.66	34.36	0.004147	34.34	3 + 80	-0.56	-0.896	-0.336	
3 + 90		5.66	34.36	0.004247	34.36	3 + 90	-0.56	-0.920	-0.360	
4 + 00		5.55	34.47	0.004347	34.36	4 + 00	-0.45	-0.943	-0.493	
4 + 10		5.60	34.42	0.004448	34.47	4 + 10	-0.50	-0.967	-0.467	
4 + 20		5.68	34.34	0.004548	34.42	4 + 20	-0.58	-0.991	-0.411	
4 + 30		5.78	34.24	0.004647	34.34	4 + 30	-0.68	-1.014	-0.334	
4 + 40		5.77	34.25	0.004746	34.24	4 + 40	-0.67	-1.038	-0.368	
4 + 50		5.97	34.05	0.004847	34.25	4 + 50	-0.87	-1.061	-0.191	
4 + 60		5.86	34.16	0.004945	34.05	4 + 60	-0.76	-1.085	-0.325	
4 + 70		5.85	34.17	0.005046	34.17	4 + 70	-0.75	-1.108	-0.358	
4 + 80		5.77	34.25	0.005146	34.18	4 + 80	-0.67	-1.132	-0.462	
4 + 90		5.80	34.22	0.005247	34.26	4 + 90	-0.70	-1.156	-0.456	
5 + 00		5.89	34.13	0.005347	34.23	5 + 00	-0.79	-1.179	-0.389	
5 + 10		5.92	34.10	0.005446	34.14	5 + 10	-0.82	-1.203	-0.383	
5 + 20		5.96	34.06	0.005546	34.11	5 + 20	-0.86	-1.226	-0.366	
5 + 30		6.35	33.67	0.005646	34.07	5 + 30	-1.25	-1.250	0.000	
5 + 40		6.26	33.76	0.005742	33.68	5 + 40	-1.16	-1.250	-0.090	
5 + 50		5.95	34.07	0.005843	33.77	5 + 50	-0.85	-1.090	-0.240	
5 + 60		5.93	34.09	0.005946	34.08	5 + 60	-0.83	-0.930	-0.100	
5 + 70		5.87	34.15	0.006046	34.10	5 + 70	-0.77	-0.770	0.000	
5 + 80		5.81	34.21	0.006147	34.16	5 + 80	-0.71	-0.710	0.000	
5 + 90		5.85	34.17	0.006248	34.22	5 + 90	-0.75	-0.750	0.000	

- Table depicting existing vs proposed gutter elevations upon completion of project. All surveying and construction layout by Contractor at no direct pay. The use of an accurate laser level measuring system is anticipated in order to ensure finished gutter line provide a smooth water flow upon completion.

Install 2 NDS 12'x12" Catch Basins With Metal Grate in gutter line.

Remove and Stockpile Asphalt & Base, Scarify and Recompact Subgrade, install Geogrid, compact 6" of Recycled Base Material, and place 2" of HMAC Surface in crosshatched area from cut line to curb in red dashed area. See details.

Project Limits Sta 0+00 to Sta 5+90. Replace curb/gutter per new flow line and details. Cut & replaced concrete driveways 2' from back of curb. Drill driveways and dowels to new curb/gutter. Per Details.

Contractor to remove and stockpile material 1' behind existing curb line where no driveway exists and shall recompact at grade after new curb is installed. Owner will re-connect private sprinkler systems if damaged. Owner will provide on site storage for materials and equipment

Remove & recycle 10'x48' from front of curb this area, reinstall per details

Remove & recycle 2'x75' wide area from front of curb this area, reinstall per details Sta 0+00 to Sta 3+70

Lower existing inlet lip by 3", adjust paving. Match Gutter Grade flow lines from Sta 2+95 and 5+90 to inlet See Detail Sheet 7

75 degrees

Centerline

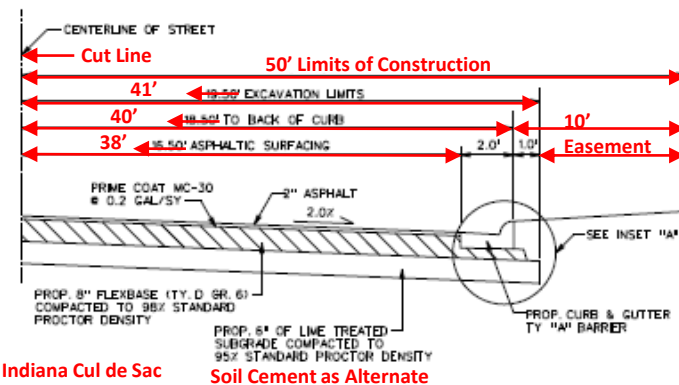
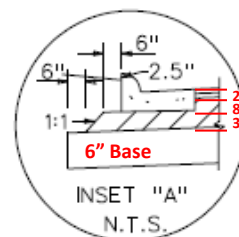
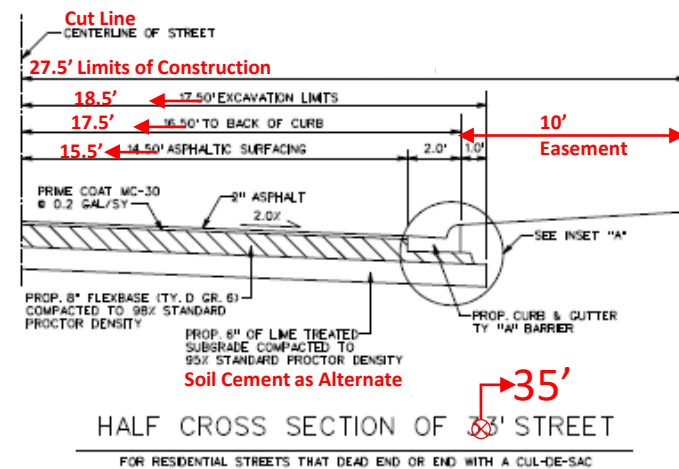
Sta 3+70'

Sta 5+90

W Indiana Circle

NOTES:

- 1) EXTEND LINED SUBGRADE ONE FOOT BEHIND CURB AND GUTTER
- 2) SET CURB ON 3 INCHES OF CALICHE BASE COMPACTED TO AT LEAST 98% OF STANDARD PROCTOR (ASTM D698) EXTEND 6 INCHES BEHIND CURB AND GUTTER
- 3) RATE FOR ASPHALT CONCRETE PAVEMENT 1" = 114 #/SY



Indiana Cul de Sac



TYPICAL STREET CROSS SECTIONS

SCALE:
N. S.

DRAWN:
B. G. S.

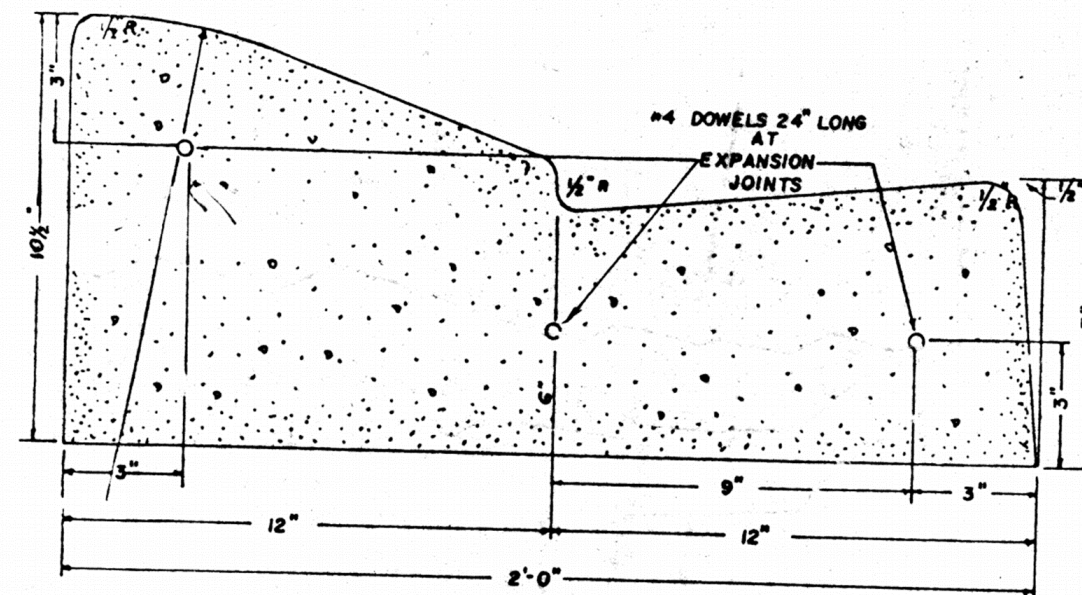
DATE:
AUGUST 2003

CITY OF HARLINGEN
HARLINGEN, TEXAS

ENGINEERING DEPARTMENT

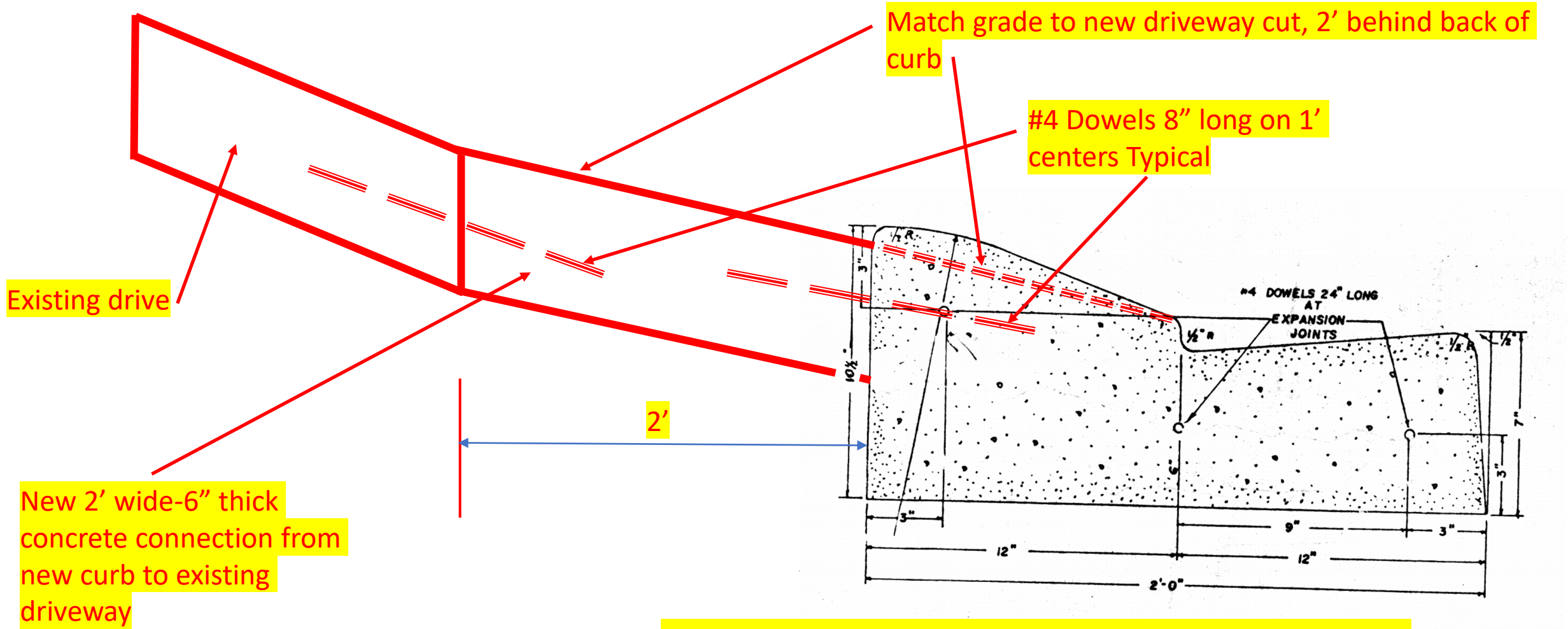
City of Harlingen Typical Sections, August 2003 shall apply with dimensions revisions shown.

Typical curb and gutter section shall match existing curb details, see typical provided below.



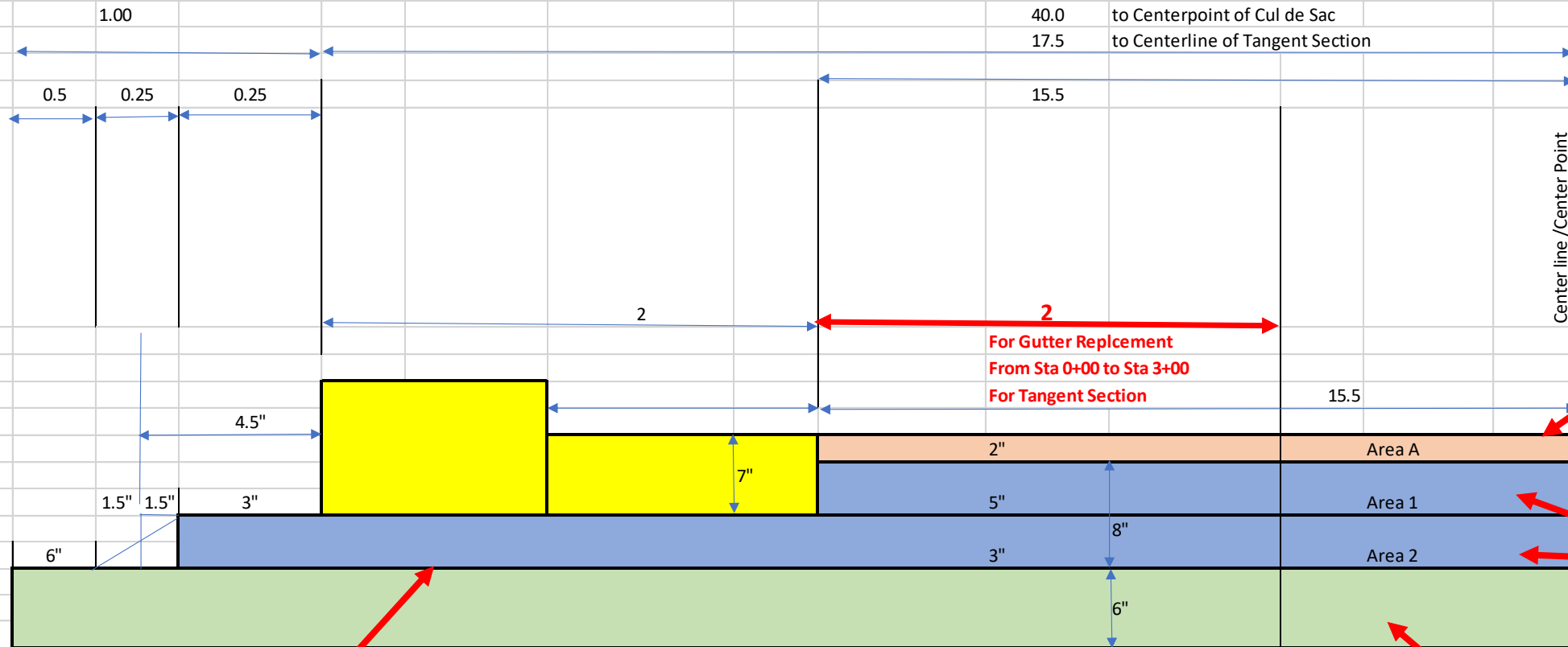
Typical for Non-Driveway

CURB AND GUTTER DETAIL



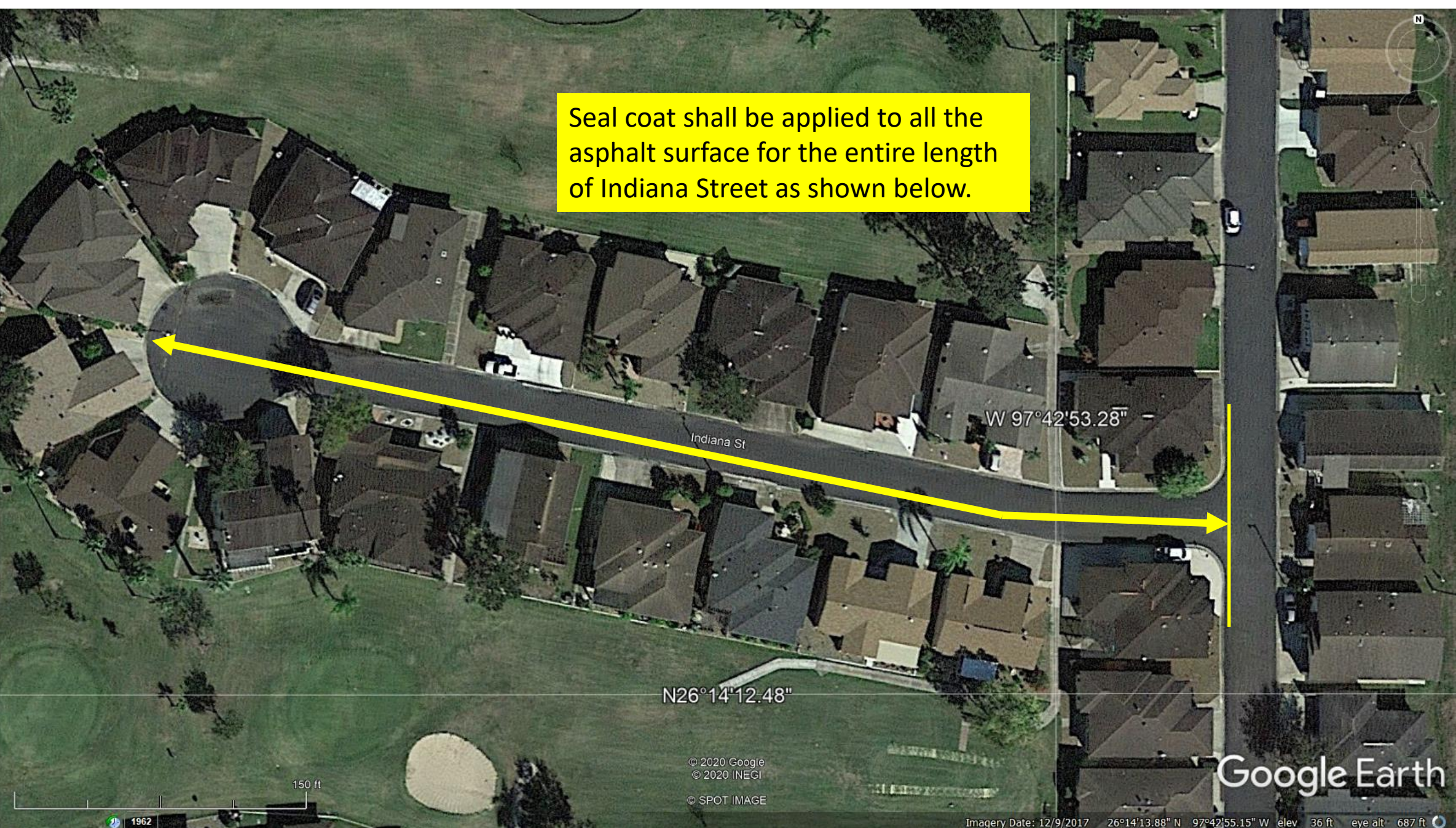
Curb at Driveway Detail. Gutter must maintain water flow line.

Roadway Section



Detail of Cul de Sac and Tangent Roadway
Section of Reconstruction for Indiana Circle

Seal coat shall be applied to all the asphalt surface for the entire length of Indiana Street as shown below.



W 97°42'53.28"

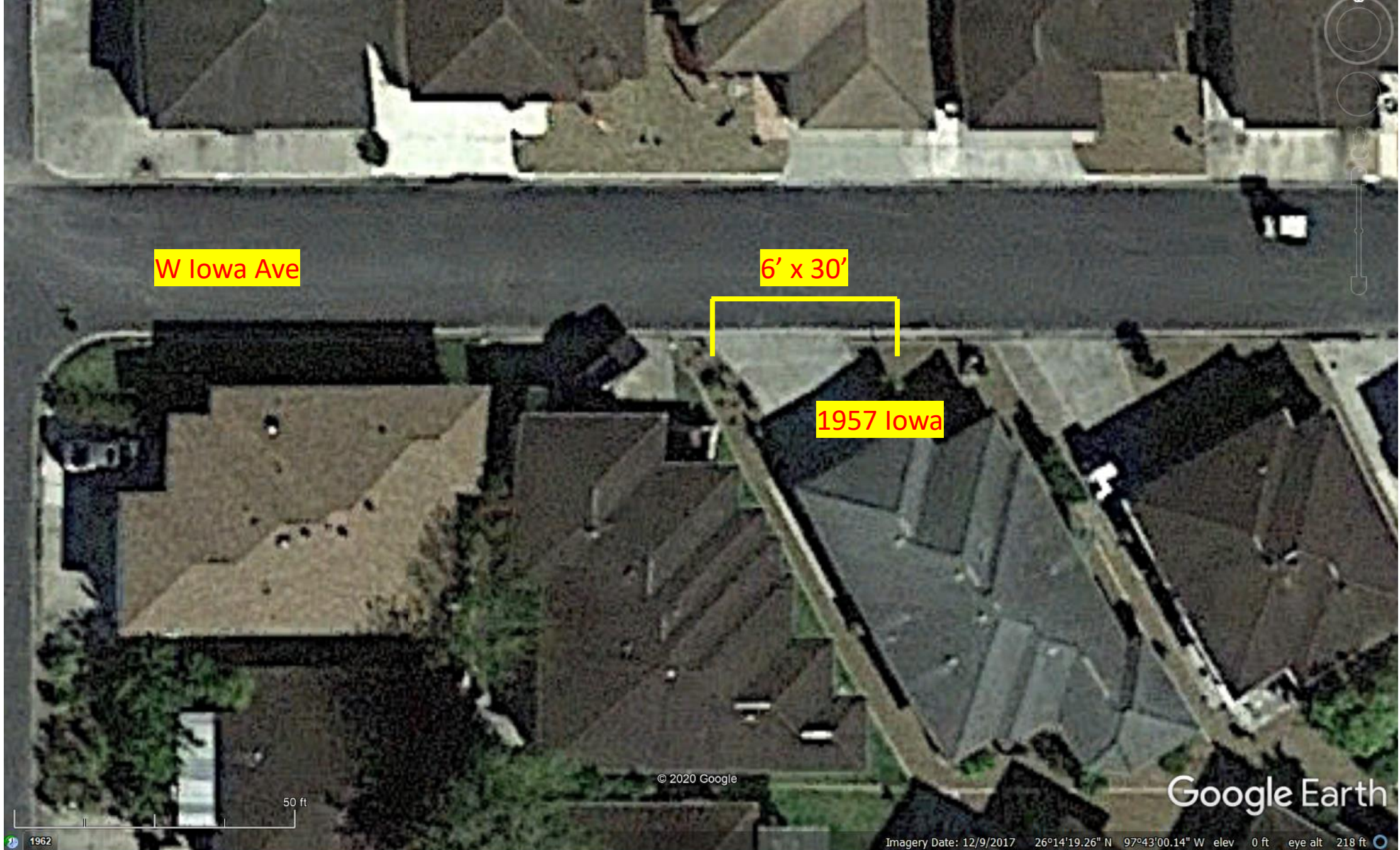
N26°14'12.48"

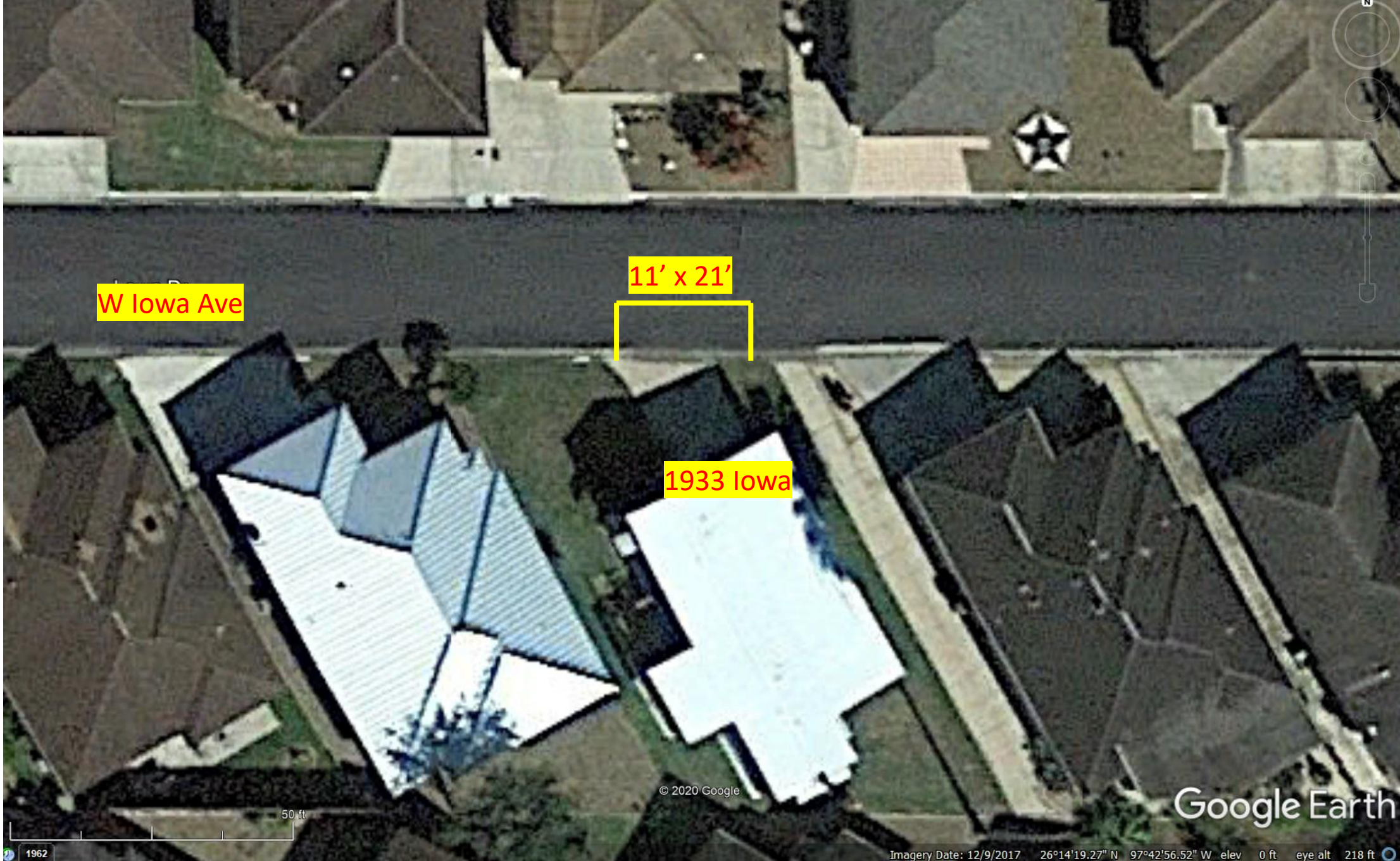
Google Earth

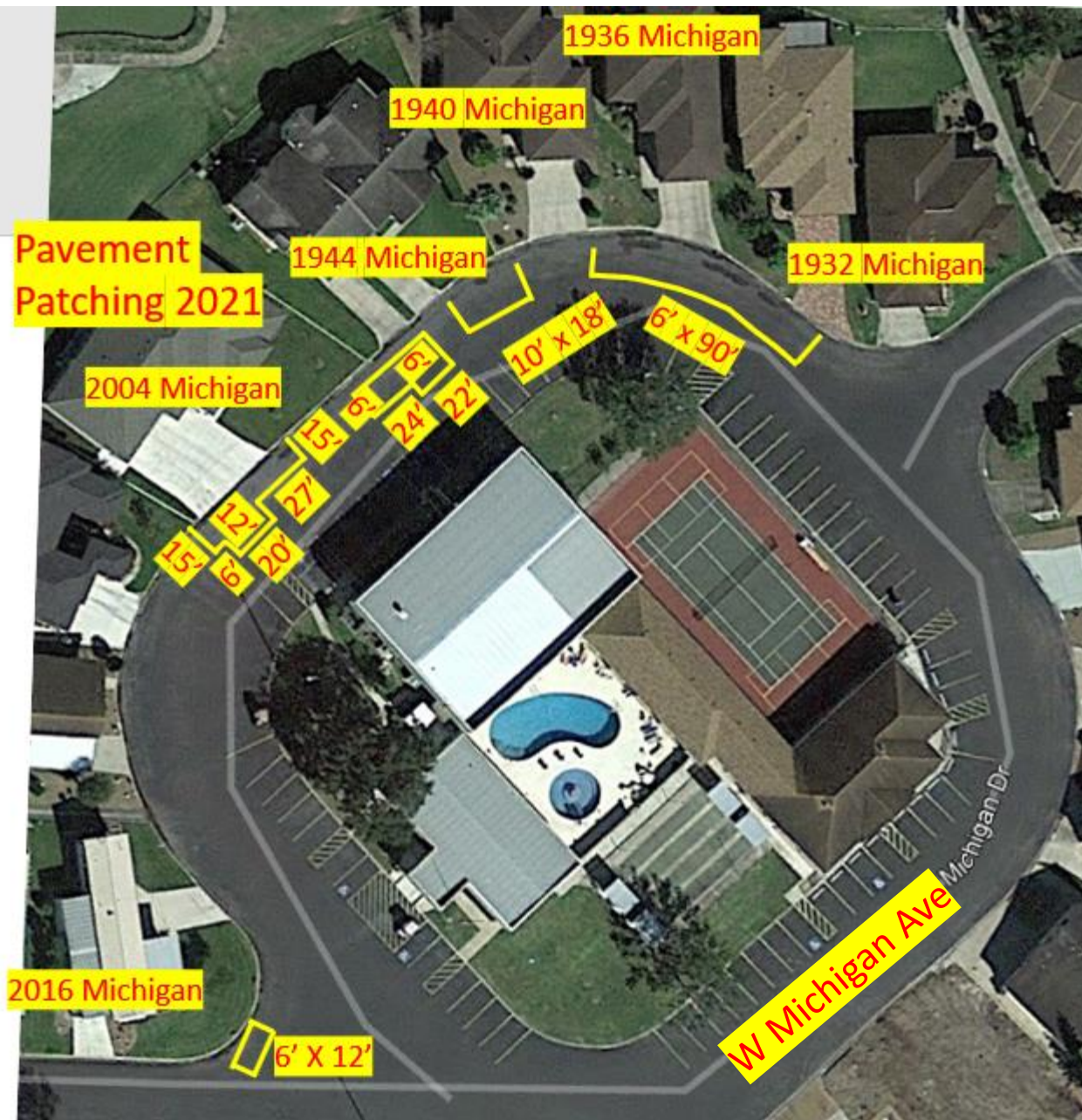
Imagery Date: 12/9/2017 26°14'13.88" N 97°42'55.15" W elev 36 ft eye alt 687 ft

End of W Indiana Circle Contractor Documents

Misc. Street Patching (Remove Asphalt and Base Materials, Compact HMAC Type D, Compact to 95% Proctor) \pm 250 SY. Specific areas as noted as follows:







Street Patching for Sunshine Estates					
			Revised (TRT)		
	Street Address				Area SF
Michigan	2016		6	12	72
	2004				0
	2004		6	15	90
	2004		12	20	240
	2004		15	27	405
	1944		6	24	144
	1944		6	22	132
	1944		11	18	198
	1936		6	90	540
Iowa	1933		11	21	231
	1957		6	30	180
				SF	2232.0
				SY	248.0
Options					
	Full Depth Replacement				
	Use 10" Flow Fill, with 2" topping				

Listing of Bid Items – Spreadsheet Provided

	Patching (Remove				
	Asphalt and base				
16	8" Caliche Base at 98% Proctor, Recycled, Oil with 2" HMAC Complete	250	\$0.00	\$0.00	
	Patching SubtotalTotal				

	Revised W Indiana Circle Phase I -		Full Project W Indiana Sta 0+00 to Sta 5+90	
Item No	Description	Quantity	Unit Bid	
1	Remove Asphalt/Subbase & Stockpile	710	\$0.00	
2	Scarify & Recompact Subgrade	710	\$0.00	
3	Install Geogrid in place	540	\$0.00	
4	Replace Base with recycled material & and compact	735	\$0.00	
5	Additional Base materials	60	\$0.00	
6	Prime Oil MC-30 (0.20 gal / SY)	108	\$0.00	
7	2" HMAC Surface	540	\$0.00	
8	Adjust Drop Inlet - cut concrete to lower entrance lip by 3"	1	\$0.00	
9	Cut concrete driveways, remove, and replace driveways with 3500 PSI Concrete and doweled wih 18" long # 4 bars on 2' centers	67	\$0.00	
10	Remove 4" Drain Opening and replace with NDS 12' Catch Basin (Material Cost per each is \$80 ea)	2	\$0.00	
11	Remove Existing & Install new curbs adjacent to driveway and doweled with 18" long #4 bars on 1'-2' centers	300	\$0.00	
12	Remove existing and Install new curbs not adjacent to driveways, no dowels required	270	\$0.00	
13	Seal Coat, 2 passes all of Indiana Circle, existing plus rehabilitated areas	1925	\$0.00	
14	Mobilization	1	\$0.00	
15	Traffic Control	1	\$0.00	
	Subtotal		Total	
	Patching (Remove Asphalt and base			
16	8" Caliche Base at 98% Proctor, Recycled, Oil with 2" HMAC Complete	250	\$0.00	
	Patching SubtotalTotal			
	Grand Total for Options			

Listing of Bid Items – Spreadsheet Provided